

EDL-118TW

Order No. 16.3850



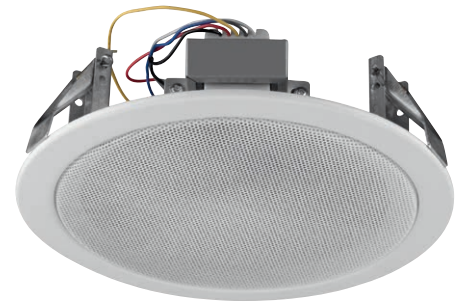
EDL-116TW

Order No. 16.3840

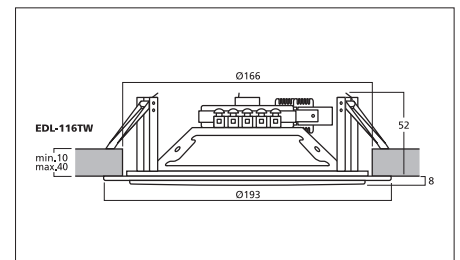


PA ceiling speaker, with integrated tweeter.

- 100 V line technique
- 2-way coaxial speaker
- Metal housing with protective grille
- Power taps: 15/10/6/3 W
- Quick-mounting facility with spring clips
- Connection via spring-loaded terminal
- For a ceiling thickness from 10 to 40 mm



Model	EDL-118TW	EDL-116TW
Frequency range	90-20,000 Hz	90-20,000 Hz
Power rating (RMS)	15/10/6/3 W	15/10/6/3 W
Sensitivity	94 dB/W/m	92 dB/W/m
Max. rated SPL	106 dB	102 dB
Mounting cutout	Ø 216 mm	Ø 166 mm
Dimensions	Ø 252 mm x 85 mm	Ø 195 mm x 55 mm
Weight	1.13 kg	0.8 kg



EDL-18

Order No. 16.3830



EDL-16

Order No. 16.3820



EDL-15

Order No. 16.3810



PA Ceiling Speakers

- 100 V line technique
- EDL-18: 20 cm (8") full range speaker
- EDL-16: 15 cm (6") full range speaker
- EDL-15: 13 cm (5") full range speaker
- Metal housing with protective grille
- Quick-mounting facility with spring clips
- Connection via spring-loaded terminal
- For a ceiling thickness from 10 to 40 mm



Model	EDL-18	EDL-16	EDL-15
Frequency range	90-16,000 Hz	90-16,000 Hz	100-16,000 Hz
Power rating (RMS)	10/6/3/1.5 W	10/6/3/1.5 W	6/3/1.5 W
Sensitivity	94 dB/W/m	92 dB/W/m	92 dB/W/m
Max. rated SPL	106 dB	102 dB	100 dB
Mounting cutout	Ø 216 mm	Ø 166 mm	Ø 152 mm
Dimensions	Ø 252 mm x 85 mm	Ø 195 mm x 55 mm	Ø 182 mm x 50 mm
Weight	1.1 kg	0.84 kg	0.6 kg

